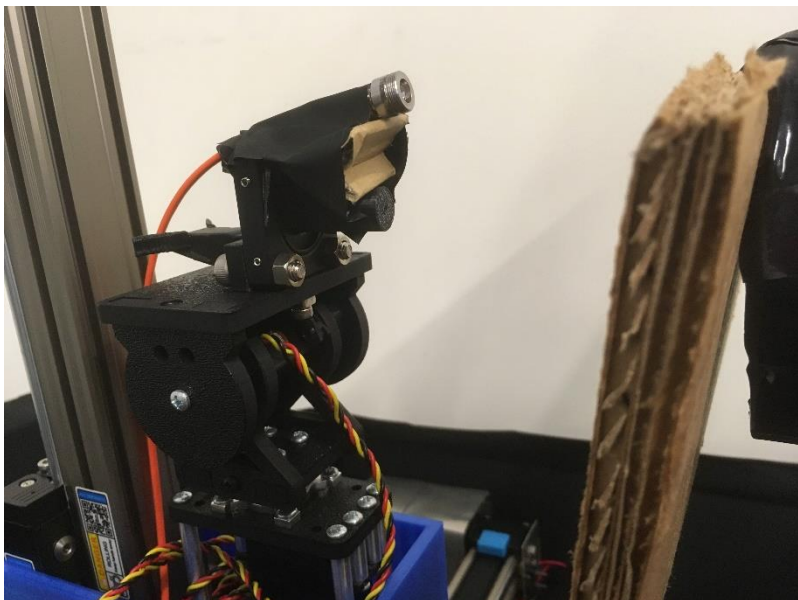


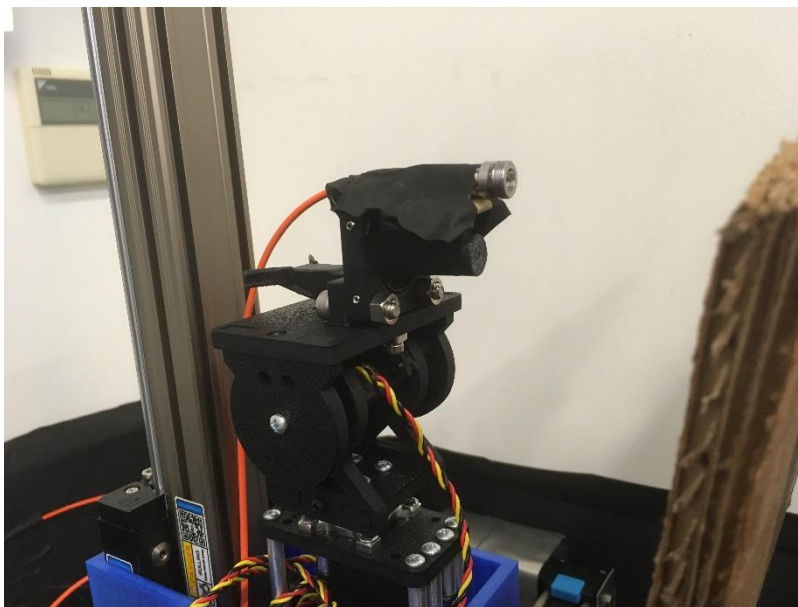
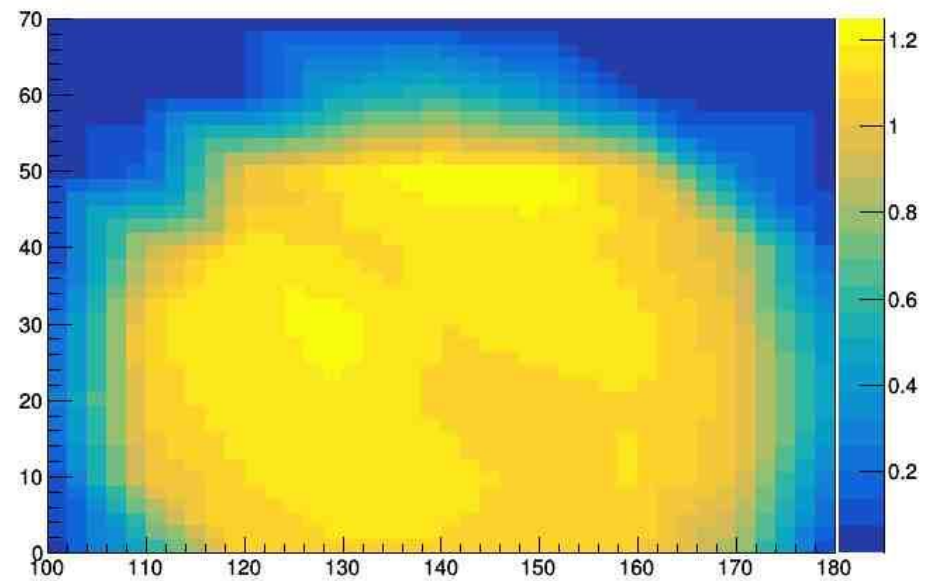
# Status Report

11/09/2018

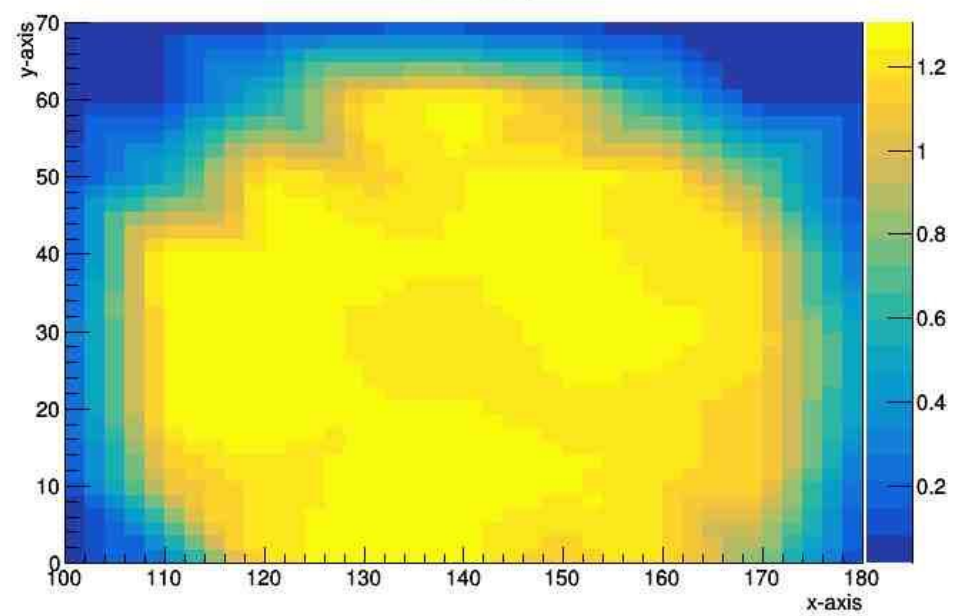
TUS Nao Izumi



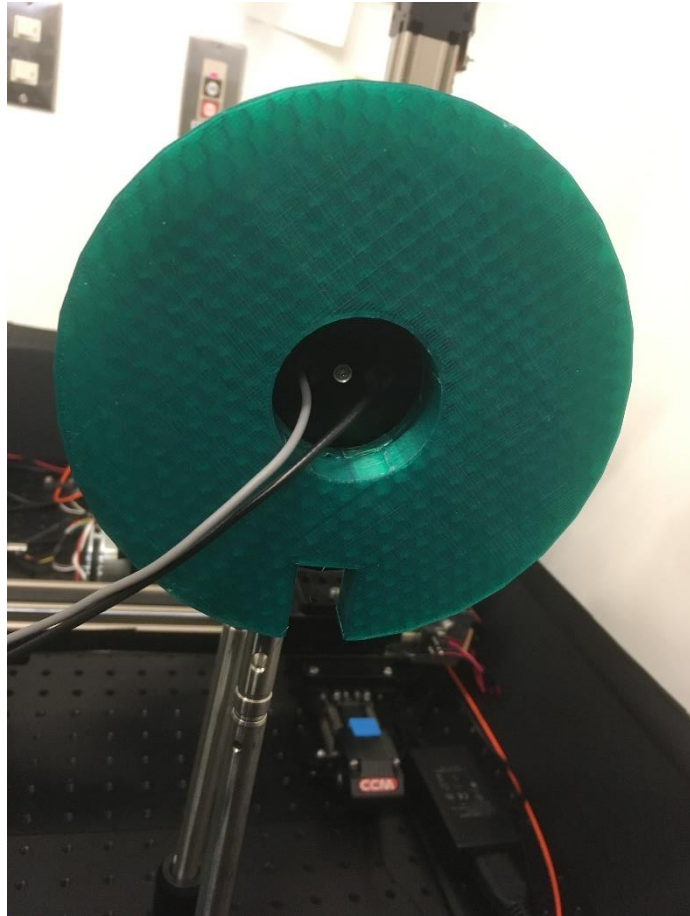
run\_359\_npe



run\_356\_npe



# a new PMT holder



I made a new PMT holder so that you can now see inside the mu-metal.  
It's easier now to put the PMT in and out...hopefully.

# To Do

- Create a 2D map for TT.
- Do the same measurement after rotating the PMT(90 degrees, 180 degrees) to see if the pattern we saw really shows characteristics of the PMT.