

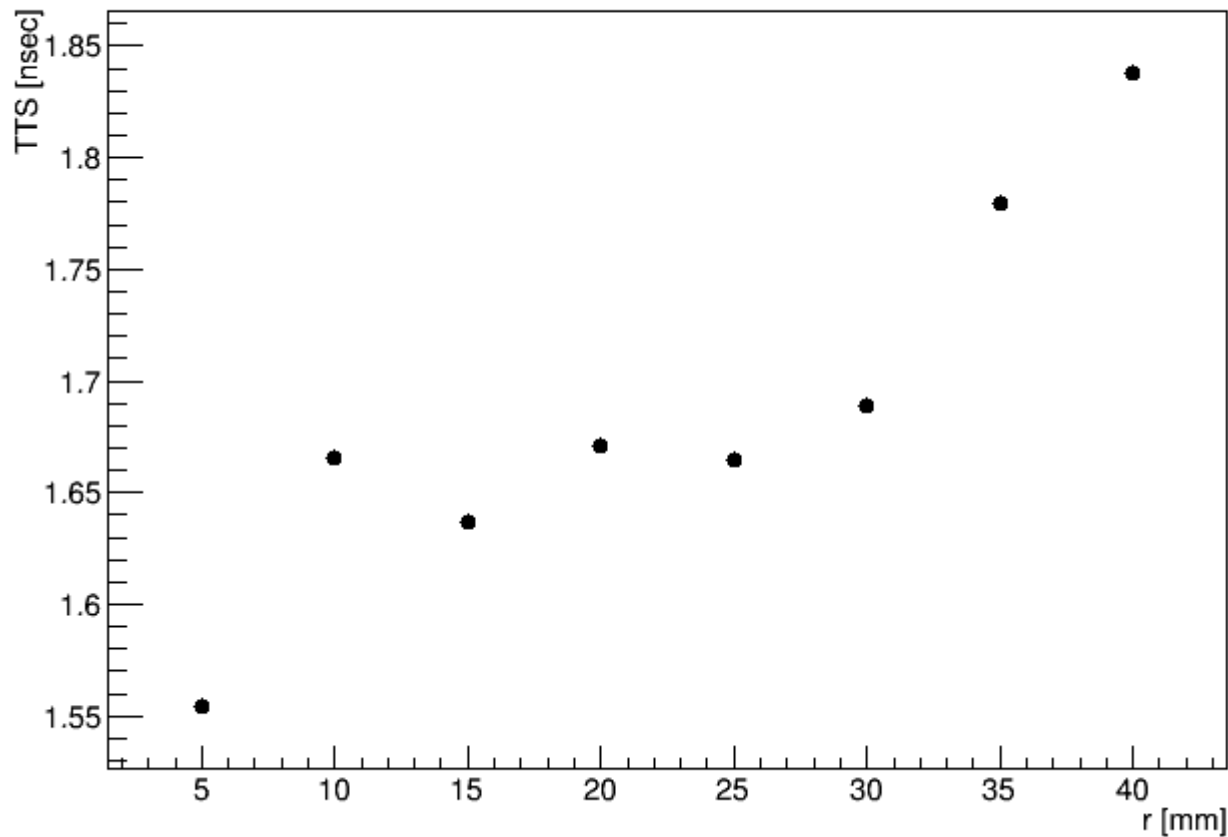
# Status Report

January 28<sup>th</sup>, 2019

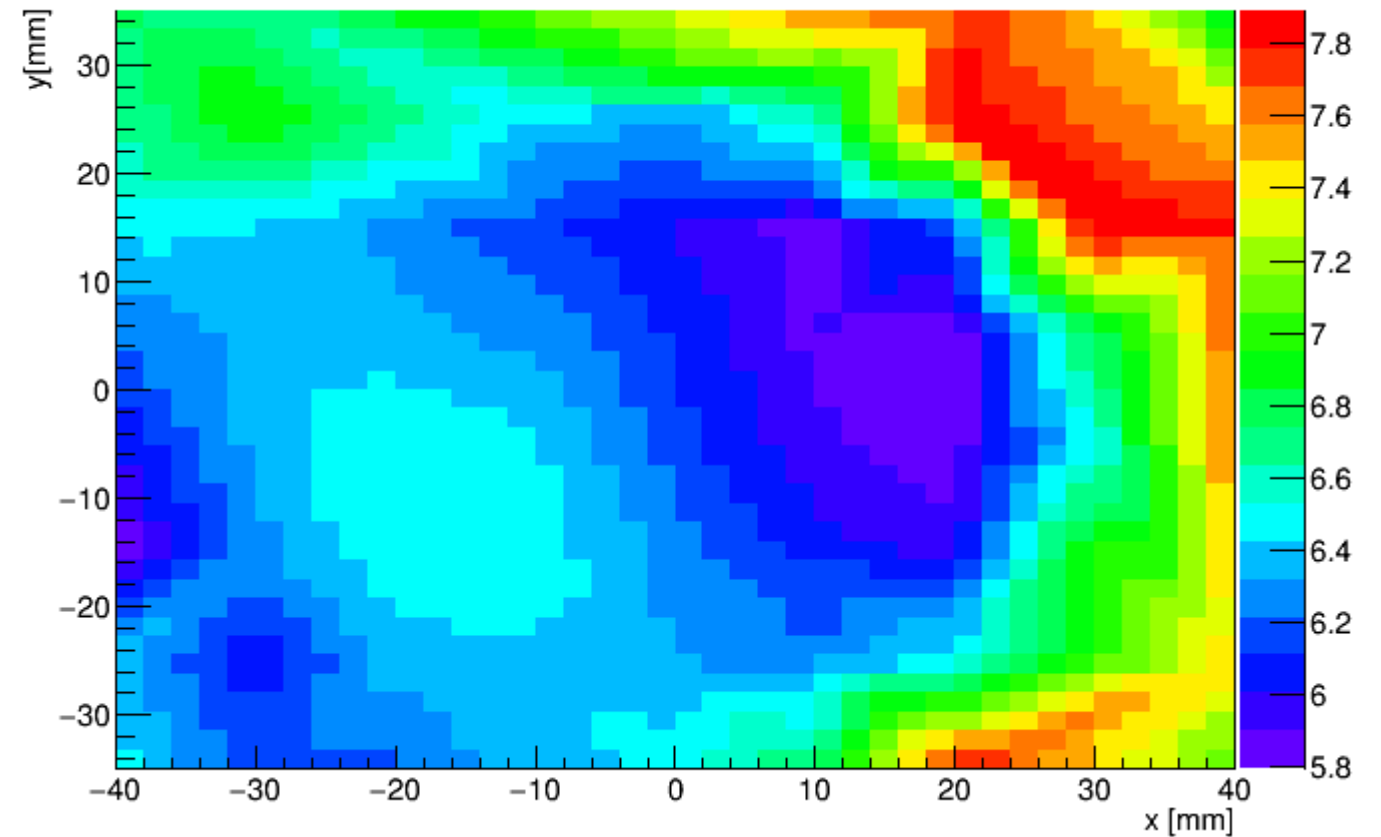
Haruya Morikawa

# TTS(r) BC0038 -1200 V

TTS



TT



1. Sum histograms within  $r$  ( $r=0 \Leftrightarrow x=0, y=0$ )
2. Fit using tFunction
3. Calculate TTS as FWHM
  - around 1.65 nsec, not 1.4 nsec ..?
    - need more measurement points

