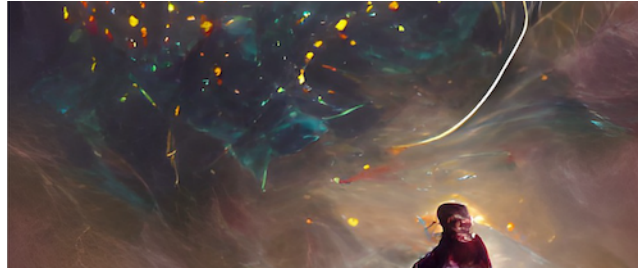


Cosmic Cartography 2022: Exploring the Cosmic Web and Large-Scale Structure



Contribution ID: 2

Type: **not specified**

Mapping the Circumgalactic Medium Through the Diffuse Emission

Monday, 7 March 2022 14:15 (30 minutes)

In this talk, I will present our survey of enormous Ly α nebulae at $z=2$. These enormous Ly α nebulae reside in the density peak of large-scale structures. Using Keck Cosmic Web Imager, combined with the Subaru/HSC, ALMA and VLA, we studied the detailed properties and kinematics of the circumgalactic medium (CGM) through the emission. Combined with simulations, our observations are able to compare with detailed modeling and probe how galaxies are fed by the intergalactic medium and circumgalactic medium.

Presenter: CAI, Zheng (Tsinghua University)

Session Classification: Day 1 Afternoon