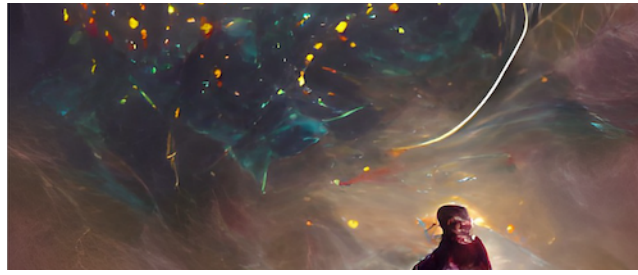


Cosmic Cartography 2022: Exploring the Cosmic Web and Large-Scale Structure



Contribution ID: 26

Type: **not specified**

Resimulating gas components of of the local cosmic web

I will describe a method to reconstruct the initial conditions responsible for the cosmic web observed in the low- z universe, and present results of hydrodynamic simulations using these initial conditions. These simulations can be used to understand how the gas components in the local cosmic web evolve with time to produce the gaseous structures we see today.

Presenter: MO, Houjun (University of Massachusetts)

Session Classification: Day 3 Morning