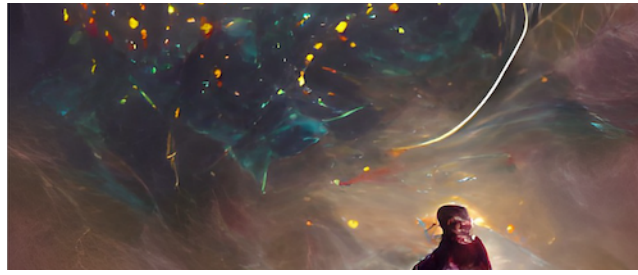


Cosmic Cartography 2022: Exploring the Cosmic Web and Large-Scale Structure



Contribution ID: 45

Type: **not specified**

Galaxy evolution in the cosmic web at $z > 1.5$

Thursday, 10 March 2022 09:45 (30 minutes)

The evolution of galaxies is linked to the growth of large scale structure in ways that are still poorly understood. This is, in part, because deep, wide-field spectroscopy is essential for associating individual galaxies with specific environments. I will summarize results from the GOGREEN imaging and spectroscopic survey of 21 galaxy clusters at $1 < z < 1.5$. While we do find evidence that accretion onto massive structures plays a role in quenching star formation for low mass galaxies ($M < 1e10$), it appears that the more massive galaxies ceased forming stars long before their arrival in the cluster. I will conclude by looking forward to what we can learn from protoclusters at $2 < z < 3$, and from the next generation of facilities like the Maunakea Spectroscopic Explorer (MSE).

Presenter: MICHAEL, Balogh (University of Waterloo)

Session Classification: Day 4 Morning