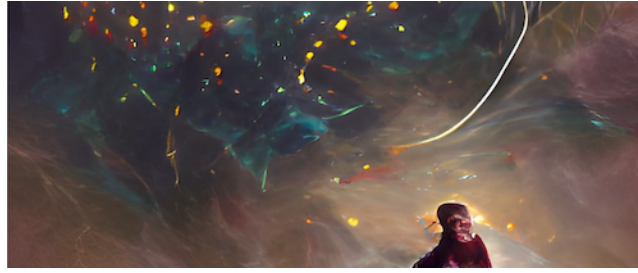


Cosmic Cartography 2022: Exploring the Cosmic Web and Large-Scale Structure



Contribution ID: 60

Type: **not specified**

Clusters and the (Disperse) cosmic web

Friday, 11 March 2022 10:00 (20 minutes)

Clusters are matched to nodes in several versions of the cosmic web created by the Disperse web finder, and filaments between nodes are then assigned to their cluster counterparts. This picks out parts of the underlying cosmic web. Properties of the correspondence and those clusters and nodes which don't have counterparts are described, similarly, cluster pairs with and without web assigned filaments are characterized. As different webs are considered, most clusters continue to have node counterparts, while most cluster pairs do not continue to have filaments.

Presenter: COHN, Joanne (UC Berkeley)

Session Classification: Day 5 Morning